



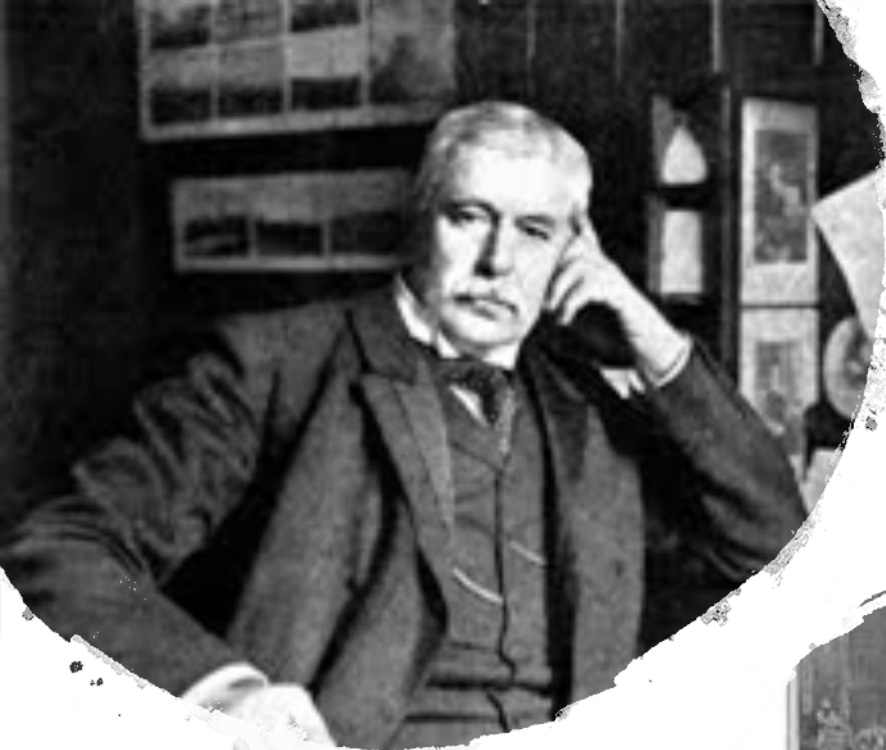
Preparing for the new megalopolis

Janice Johnston

ASPPH Academic Regional Meeting in Asia

September 2019

Hong Kong and public health



- 1894 The Black Death - Yersin
 - Control strategies implemented
 - City planning changed
- 1887 Hong Kong College of Medicine for Chinese
 - Patrick Manson – 1st Dean,
- 1892 Sun Yat Sen
 - 1 of 2 graduates of Hong Kong College of Medicine for Chinese (academic record includes Public Health)
- 2003 SARS
 - Intersectoral coordination and communication

Megalopolis – the challenges of modern cities

- Large population
 - Up and down stream thinking
 - Inequity and inequality
- Highly dense setting
 - Role of the built environment
 - Social determinants
- Leadership
 - Health and development insight
 - Complex social and economic issues and politics
- Public health competencies in all professions



Intercalation – inter-professional pathways

- broadly based graduate training
- **identify** and **analyse** contemporary health and healthcare issues in **Hong Kong, China and the Asia Pacific**.
- **develop skills in:-**
 - Innovation
 - Leadership & governance
 - Change management
 - Coordination and collaboration
 - Core PH competencies in epi, stats, research
 - Inter-professional integration



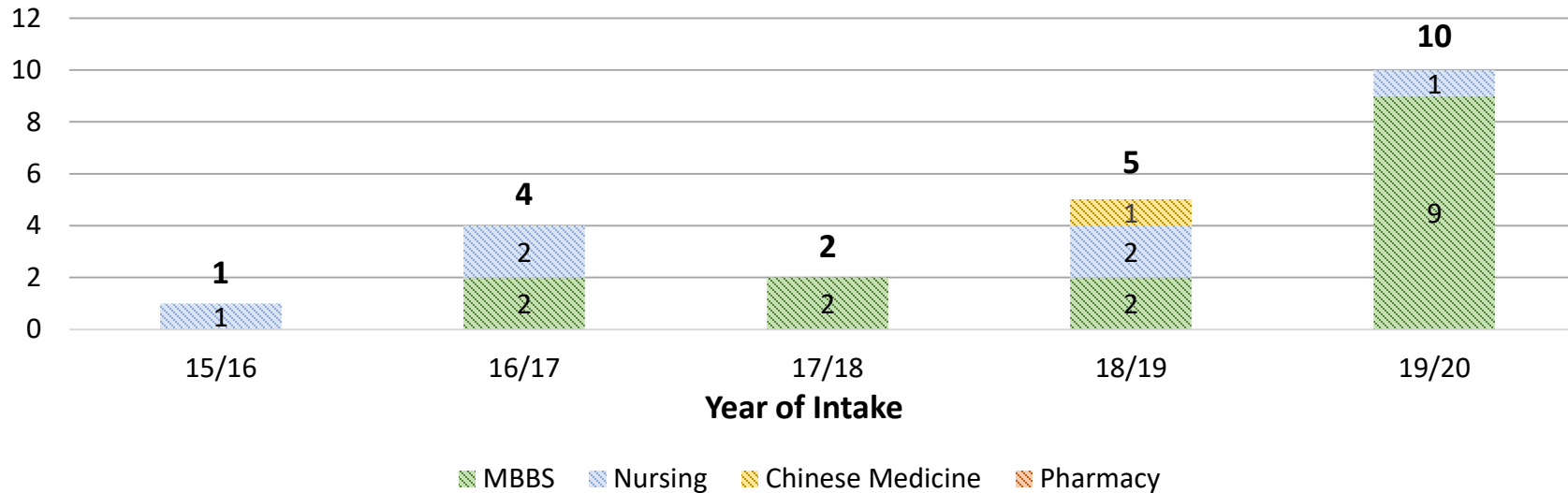
HKU MED Intercalated degrees

- degree completed in an intensive year away from the currently enrolled undergraduate degree.
 - MBBS
 - BNurs
 - BPharm
 - BChin Med
 - BASC Global Health and Development
- CEPH competencies



MPH-Intercalated Programme

Enrollment



- An inter-professional pathway for medical students of HKU

Programme	MBBS	Nursing	Chinese Medicine	Pharmacy
Curriculum Year	6-year	5-year	6-year	4-year
Year of Entry	3	4	4	3

- The award of an intercalated MPH degree will be conferred at the same time as the completion of the undergraduate programme

Outcomes

- 12 students completed MPH (3 have graduated)
- 11 students enrolled 2019/2020
- Attended PMAC, WPRO, WH Assembly
- Think about needs from a **primary care perspective** and **the needs of the community**.
- Incorporate systems thinking in medicine
- Gained a broader perspective about clinical practice, health policy and evidence based practice, environmental health
- Filled an area lacking in my clinical training

