



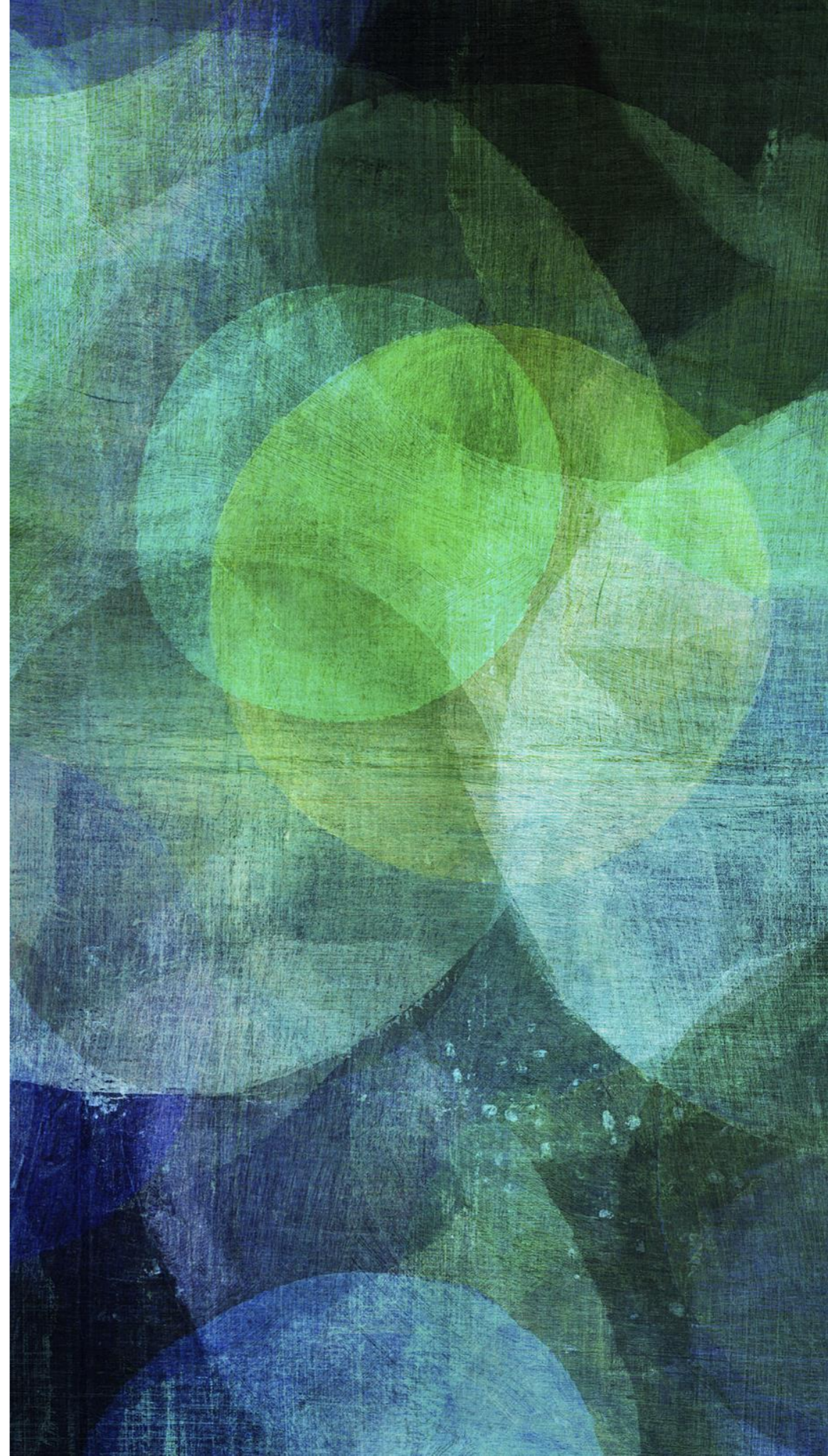
PU UNIVERSITI KEBANGSAAN MALAYSIA CH
W The National University of Malaysia IN
MALAYSIA:
STATUS AND
CHALLENGES

*Dr Bariah Mohd Ali, PhD
Professor
Faculty of Health Sciences
Universiti Kebangsaan Malaysia*

ASPPH Regional Meeting, Taipei, Taiwan 24th Sept, 2019

UNIVERSITI
KEBANGSAAN
MALAYSIA AND
MINISTRY OF
HEALTH,
MALAYSIA

Acknowledgements





CONTENT

- Current status
- Challenges
- Opportunities



DEFINITION OF PUBLIC HEALTH

Public health is defined as **the science of protecting the safety and improving the health of communities through education, policy making and research for disease and injury prevention.**

The definition of public health is **different** for every person. Whether you like to **crunch numbers, conduct laboratory or field research, formulate policy, or work directly with people to help improve their health**, there is a place for you in the field of public health. Being a public health professional enables you to **work around the world, address health problems of communities as a whole, and influence policies that affect the health of societies.**

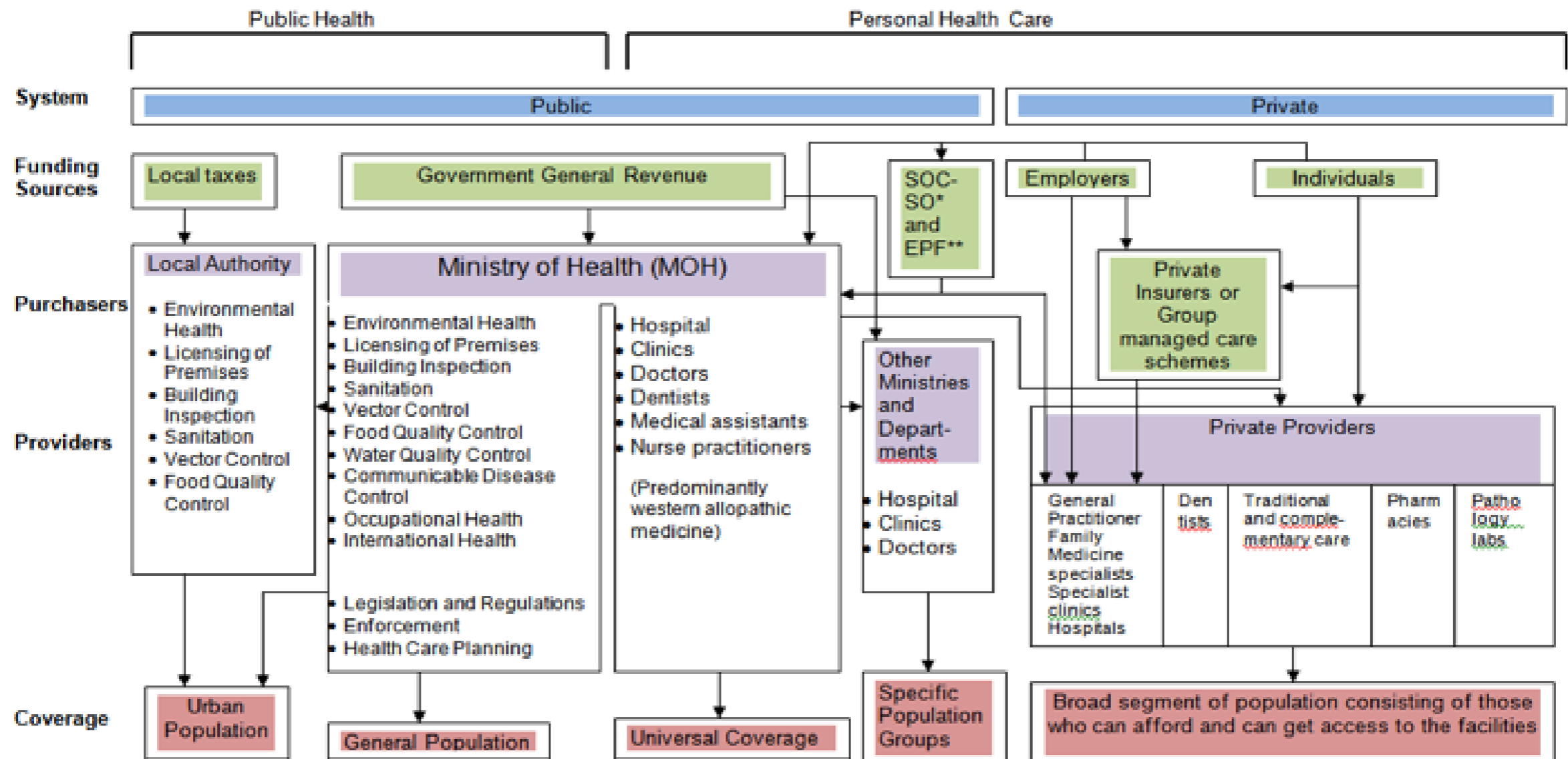
(University of Pittsburg, USA)



WHO ARE THE PUBLIC HEALTH WORKFORCE?

- Medical doctors
- Dentists
- Pharmacists
- Allied health professionals (dietetics/nutritionist/health educators/optometrist/physiotherapist etc)
- Nurses
- Scientists (microbiologists/biomedicals)
- Engineers/Technicians
- Biostatisticians
- Etc..

HEALTH SYSTEM IN MALAYSIA



NHMS2011 – only medical visit)

Hospital Admissions -	74%	:	26%
Outpatient contacts -	49%	:	51%

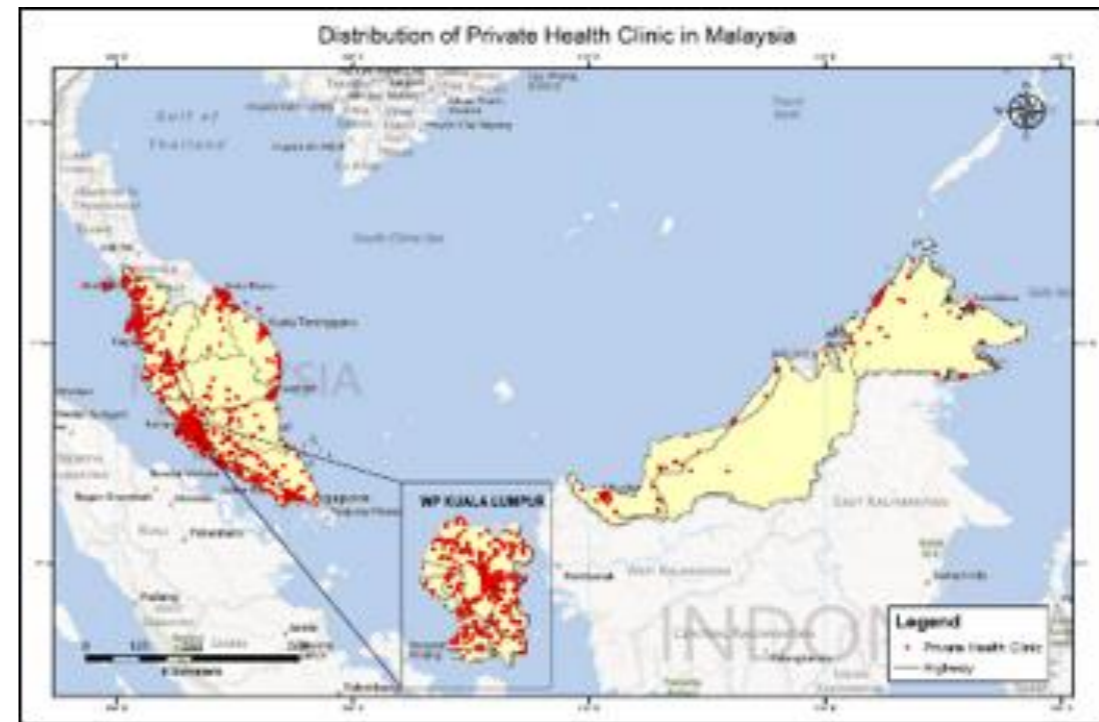
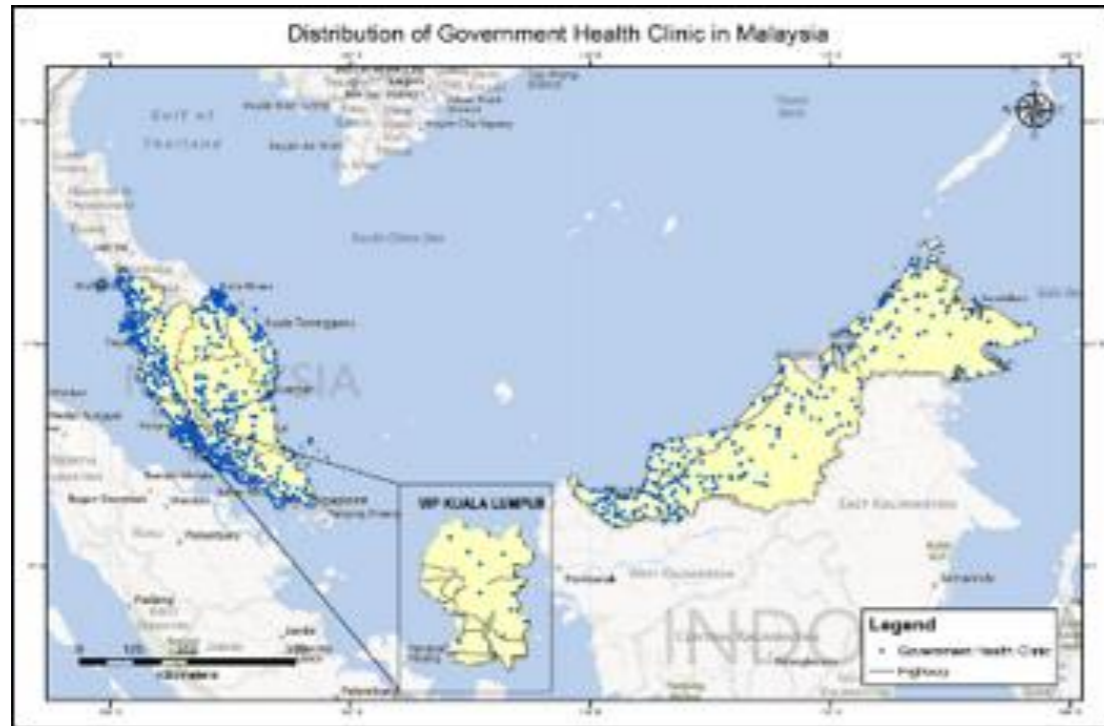
HCGA study

* SOCSO - Social Security Organisation
 ** EPF - Employee Provident Fund

Source: Rozita Halina Hussein, Asia Pacific Region Country Health Financing Profiles: Malaysia, Institute for Health Systems Research

DISTRIBUTION OF HEALTH FACILITIES IN MALAYSIA

STUDY ON MAPPING OF HEALTH FACILITIES AND SERVICES (BY INSTITUTE OF PUBLIC HEALTH)



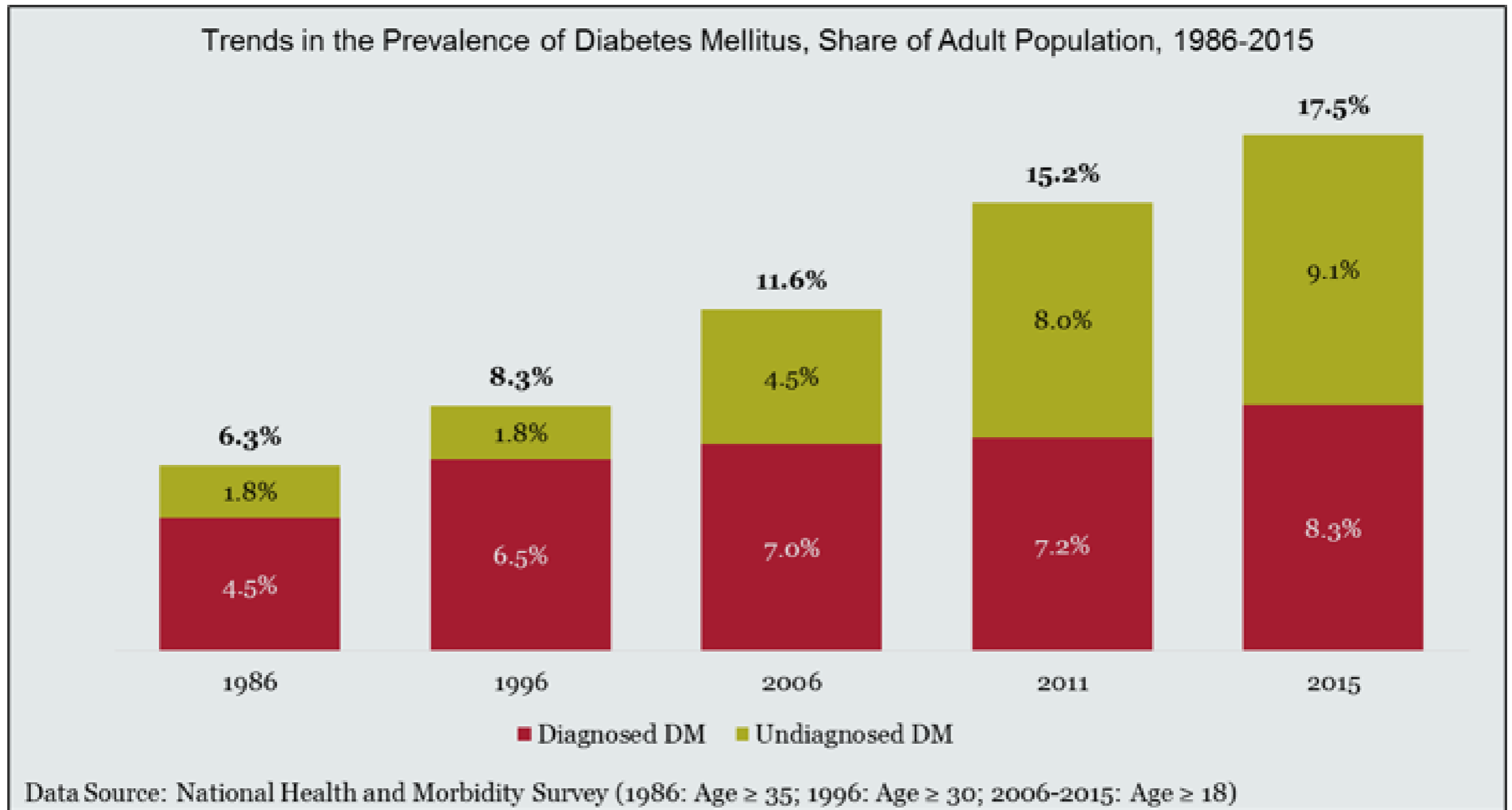
HEALTH CARE IN MALAYSIA



Provides primary continuing, comprehensive, coordinated whole person care to individuals, families and their communities from womb to tomb

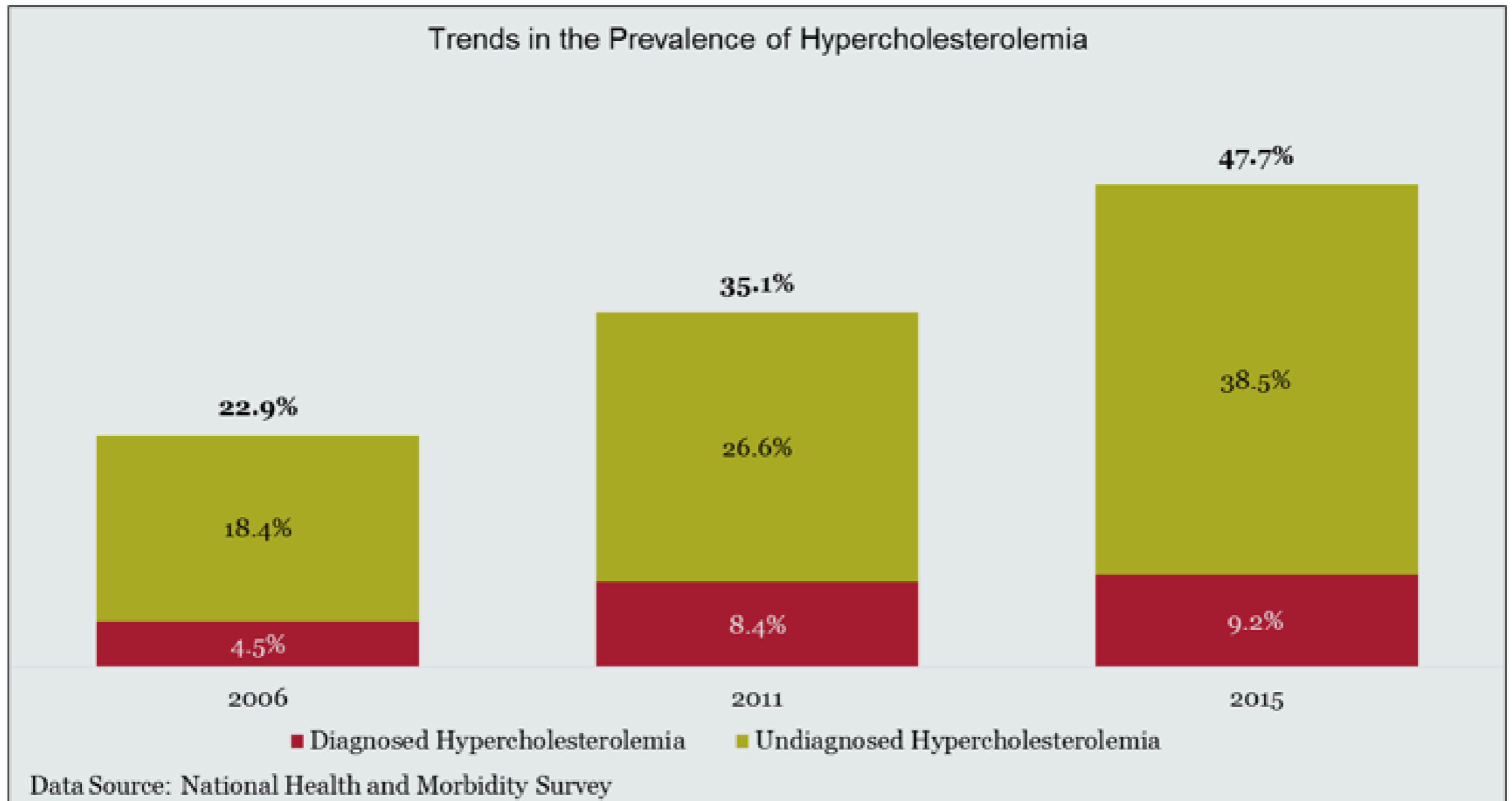
Lifecourse Approach

INCREASED PREVALENCE OF NCDs



Diabetes mellitus: Rapidly growing prevalence in 1986–2015, with most of the increase in undiagnosed cases

INCREASED PREVALENCE OF NCDS



Hypercholesterolemia: Rapid increase in prevalence in adult population in 2006–2015, 80% of adults with HCL undiagnosed

POLLUTION ISSUES - SUNGAI KIMKIM, JOHOR (FEB 2019)



ENVIRONMENTAL ISSUES-HAZE



Haze in Kuala Lumpur 18 Sept, 2019



CHALLENGES FACED BY PUBLIC HEALTH WORKFORCE IN MALAYSIA

- Less efficient due to lack of coordination between ministries, universities, research institutions, private hospitals/clinics
- Unequal distribution of public health workforce (urban vs rural)/understaff
- Recognition - less recognition compared to clinical specialists



OTHER CHALLENGES

- Rising cost of healthcare - more funds needed for public health
- Existing/Emerging NCDs
- Existing/Emerging environmental issues
- Aging population - predicted to be aged nation by 2035 (more than 15% of total population will be 60 years and older)
- Managing public expectations (social media/internet)

TRAINING OF PUBLIC HEALTH WORKFORCE AVAILABLE IN MALAYSIA



- Medical doctors/public health specialists
- Dentist/public health specialists
- Pharmacists - community
- Nurses
- Nutritionists/Dieticians
- Rehab (audiologists/speech therapists/physiotherapists/occupational therapists/Optometrists)
- Scientists (biomedical/environmental)
- Biostatisticians
- Engineering/technicians
- Health educators
- Clinical psychologists

OPPORTUNITIES

- Improve organisational capacity and management (manpower/training/infrastructure/finance)- improve efficiency of public health workforce
- Better recognition by the relevant ministries
- Focus on prevention as priorities (awareness programs/community empowerment)
- Work together (government agencies/private sectors/higher learning institutions/research institutes etc) with good coordination - integrated intervention for communities



EMPOWERING COMMUNITY - DENGUE PREVENTION

Year	Period number of cases	Number of deaths
2015	Jan 1 to Aug 3	92
2018	Jan 1 to Aug 3	70
2019	Jan 1 to Aug 3	113

EMPOWERING COMMUNITY - DENGUE PREVENTION

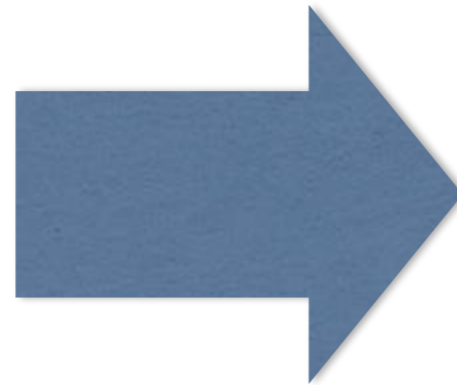


Projek Komuniti Bebas Denggi (KBD) is a programme designed to help communities reduce the risk of dengue. We empower and equip people with the necessary tools to effectively control the aedes mosquito population at the source, by effectively eradicating larvae, and ensuring a sustainable prevention and protection programme.

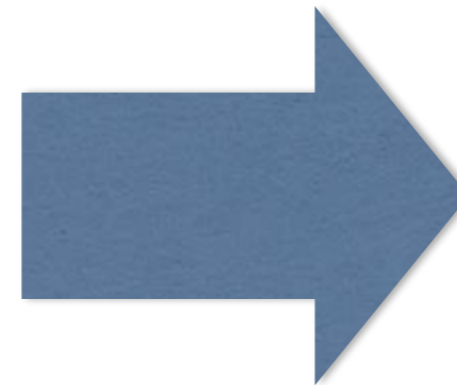
KBD aims to complement the existing efforts in the battle against dengue.

APPROACH

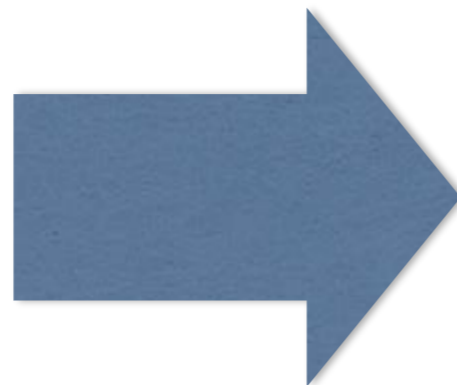
1 *Community
Empowerment
Activation*



2 *Innovative
Tools and
materials*



3 *Knowledge &
information*



Vision For Health
“A Nation Working Together for Better Health”



THANK YOU